



# WHAT'S CULTURE GOT TO DO WITH IT?

## ENGAGING CHICAGO'S DIVERSE COMMUNITIES

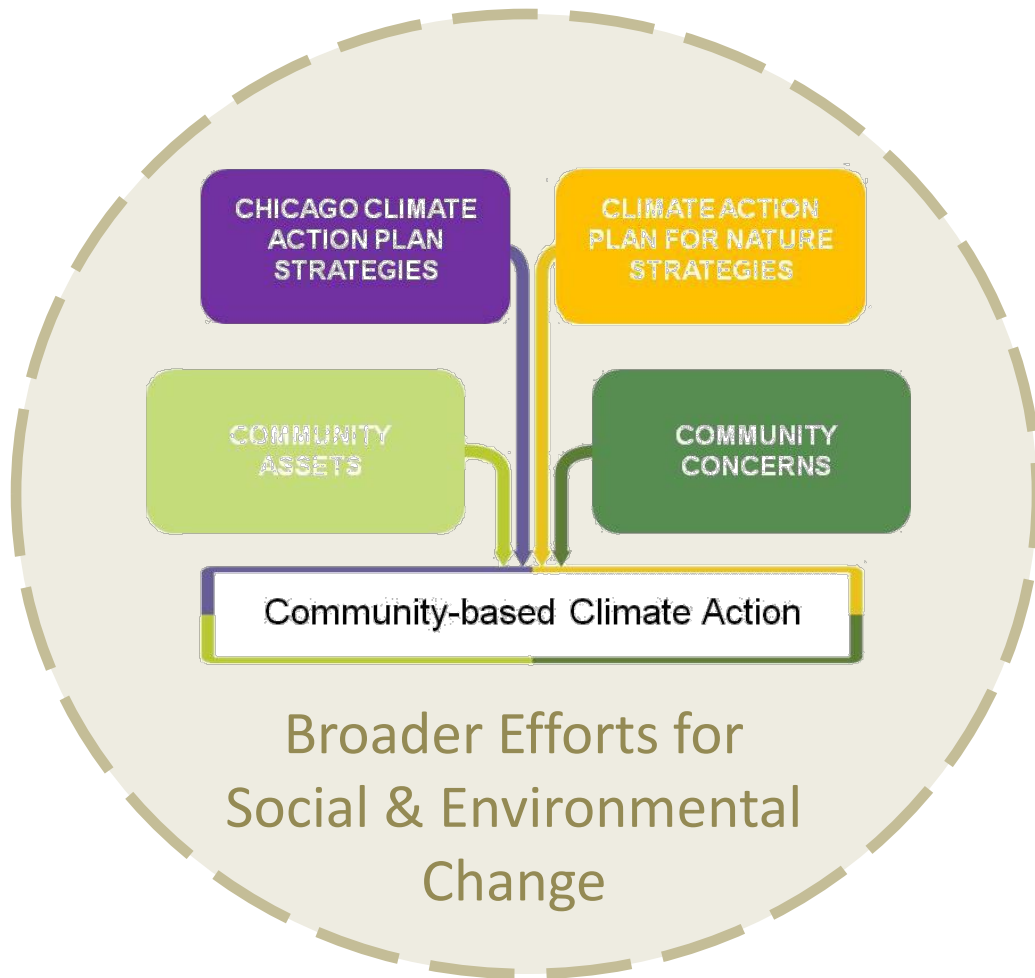
### IN CLIMATE ACTION

Jennifer Hirsch, Ph.D.  
[jhirsch@fieldmuseum.org](mailto:jhirsch@fieldmuseum.org)

The **Field**  
Museum

**E**nvironment **C**ulture and **C**onservation  
A Division of Science

# Research-to-Action Process



1. **Research** relevant community assets and concerns (co-benefits)
2. **Assemble** diverse partnerships
3. **Translate** regional plans into community strategies
4. **Develop and implement** community action project
5. **Scale** up and out

# 9 Community Research Studies

## ***Tangible Assets:***

- Active libraries/art centers
- Nature preserves
- Entrepreneurs invested in the community
- City-wide partnerships
- Construction/gardening skills
- High percentage of home ownership

## ***Intangible Assets:***

- Home country traditions: re-use, gardening, water conservation
- Awareness of climate change through Hurricane Katrina, local weather events
- History of collaboration to address big challenges

## ***Concerns:***

- Access to healthy food
- Youth opportunities
- Air quality
- Beautification
- Economic development
- Revitalizing cultural traditions



Download reports at: [fieldmuseum.org/climateaction](http://fieldmuseum.org/climateaction)

# Creative Methods

StoryCollecting/Telling ParticipatoryMapping/Photography  
ParticipatoryActionResearch CommunityReviewOfPreliminaryFindings  
WhatThreeWordsComeToMindWhenYouHearClimateChange  
Drawing:WhatDoesClimateChangeLookLikeToYou  
ChecklistOfEnvironmentally-FriendlyPractices CommunityCuration  
PlaceYourselfOnTheLine VisualCollagesOfClimate-FriendlyPractices  
ChecklistOfCommunityConcerns Photo/ObjectElicitation  
WhatDoesGreenMeanToYou GreenAssetMapping  
Photography/Video



1. Research

2. Assemble

3. Translate

4. Develop

5. Scale



# Case Study:



## CHICAGO COMMUNITY CLIMATE ACTION TOOLKIT

### **Forest Glen:**

Scouts install rain barrels, gardens, and bat boxes



### **Pilsen:**

Native garden where children can play and families can learn about climate change



### **Bronzeville:**

African-American gardens and healthy cooking, and green tours



### **South Chicago:**

Youth-created community-wide exhibit of green practices



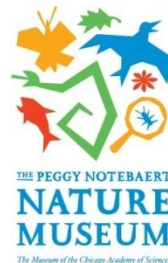
# Pilsen Partnership



## 1-Diverse Community Partners



## 123-Facilitator



2-Technical Assistance  
(landscape architecture,  
soil remediation)

3-Scale-Up/Sustainability Partners  
(training/resources for unstructured outdoor play)

1. Research

2. Assemble

3. Translate

4. Implement

5. Scale

# Pilsen Research Findings

## Assets:

- 80% Mexican/Mexican-American
- Environmental consciousness central to Pilsen's Mexican culture
- Artistic enclave
- Strong social justice coalitions incl. environmental justice
- Creative and active use of open/public space
- Active garden network
- Tradition of outdoor interactions

## Concerns:

- Health incl. coal-fired power plants
- Lack of green space
- Opportunities for youth
- Immigration
- Retaining cultural identity

A young staff person at Orozco School said that neighborhood parents have been very supportive of the community garden and that they frequently mention their own close ties to the earth and to gardening. She also said that the community garden has many other benefits including a time for parents to talk to their children about some of the gardening practices that they have in Mexico.



1. Research

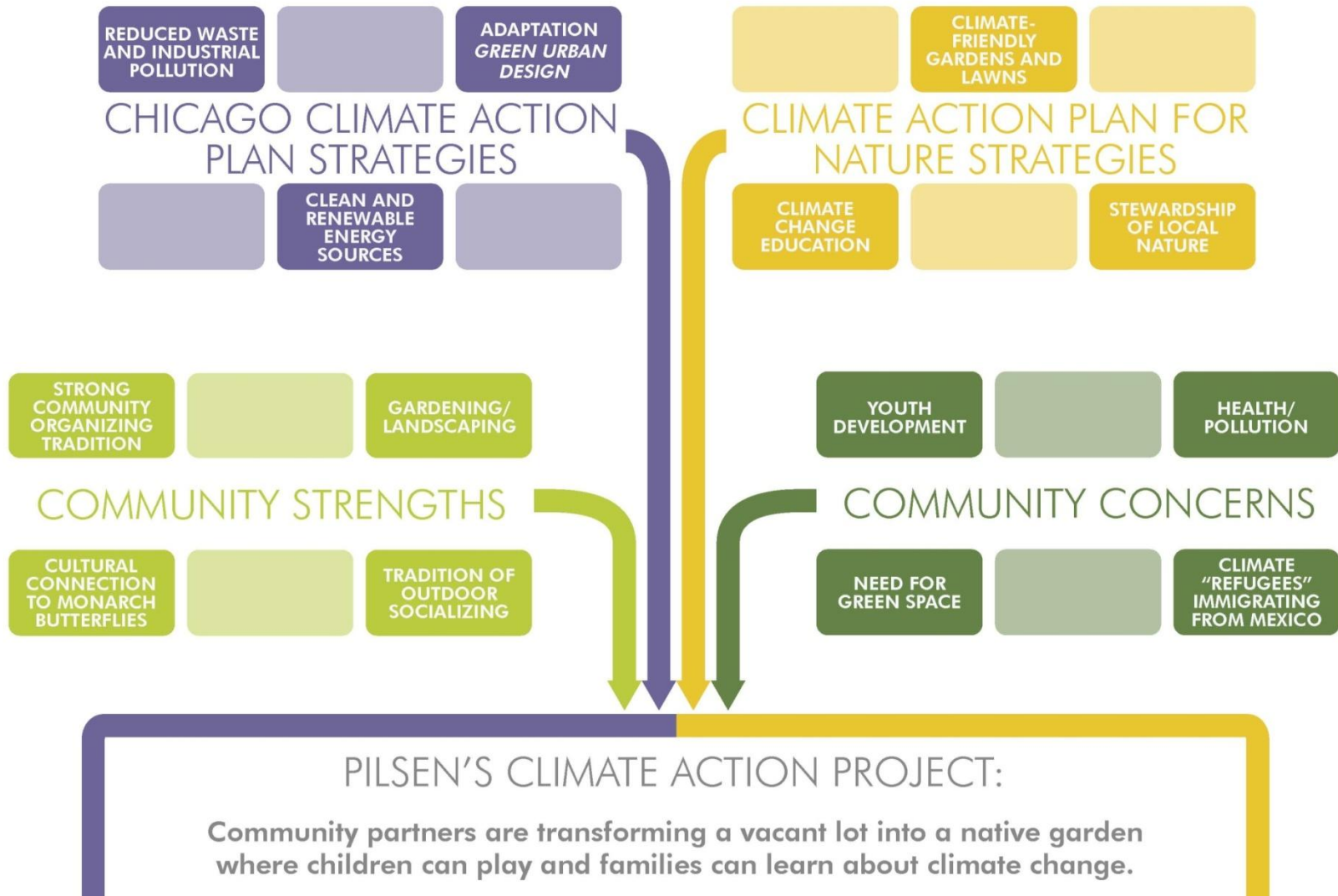
2. Assemble

3. Translate

4. Implement

5. Scale

# Pilsen's Project Approach



1. Research

2. Assemble

3. Translate

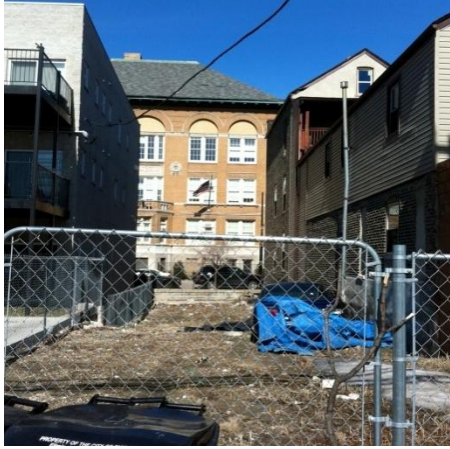
4. Implement

5. Scale

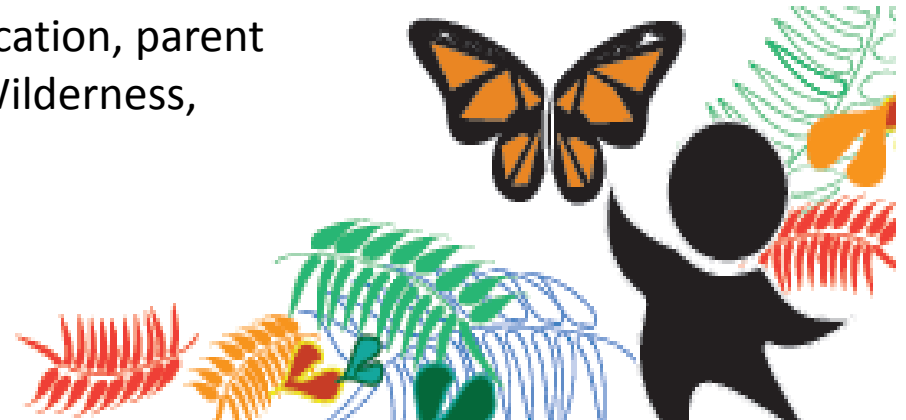


# MARY ZEPEDA NATIVE GARDEN

## an outdoor climate classroom



- Educational space: signage on industrial history, EJ in Pilsen, immigration, Monarch migration, reclaimed space, outdoor play and health
- Workshops on rain barrels, Monarch migration, climate refugees
- Environmental Justice tour stop
- Daycare: accessible play space, science education, parent education with teacher training by Chicago Wilderness, Peggy Notebaert Nature Museum
- Outreach to neighbors incl. high school
- Alianza Verde – Pilsen as Monarch Reserve



1. Research

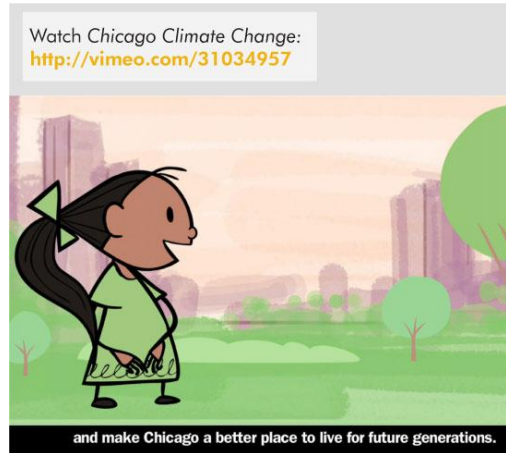
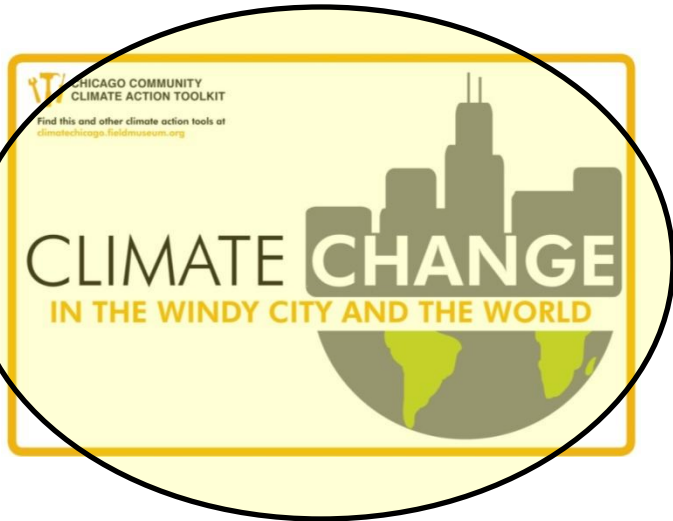
2. Assemble

3. Translate

4. Implement

5. Scale

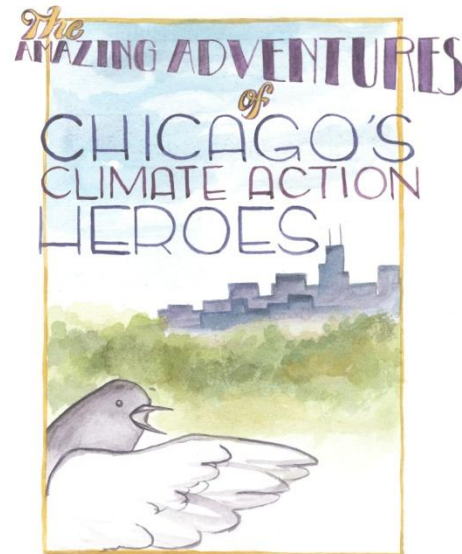
# Regional Climate Science & Action Tools



## HERE ARE A FEW STEP

### EAT LOCAL & SUSTAINABLE

In addition to considering where your food consider *how* it was made. Sometimes, producing locally emits more carbon than shipping far away. For example, "conventional" agriculture of chemical fertilizers that deplete soil and amounts of resources and energy to produce of conventional agriculture include chemicals which disrupt plant and animal life, and intensive (turning over the soil), which uses a lot of fuel ways of growing food, including organic agriculture use of water, sunshine, and farming methods over many centuries (see box below).



## WORKSHOP: DEVELOP YOUR OWN CLIMATE ACTION PROJECT IDEAS

### Introduction

At the beginning of the Chicago Community Climate Action Toolkit, we created a Climate Action Approach Diagram one of those diagrams—and there is a full page version



1. Research

2. Assemble

3. Translate

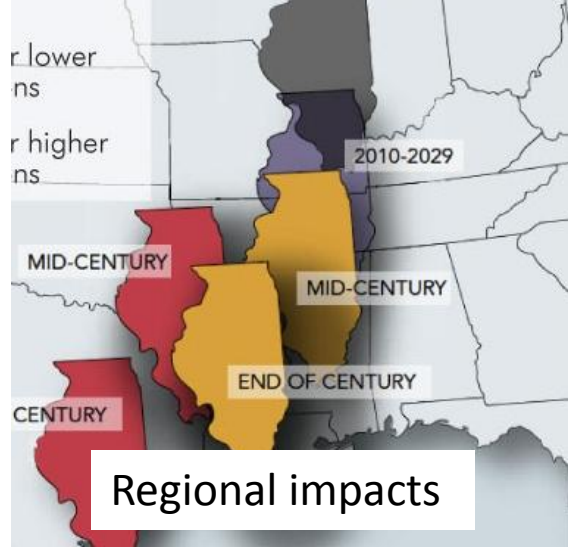
4. Implement

5. Scale

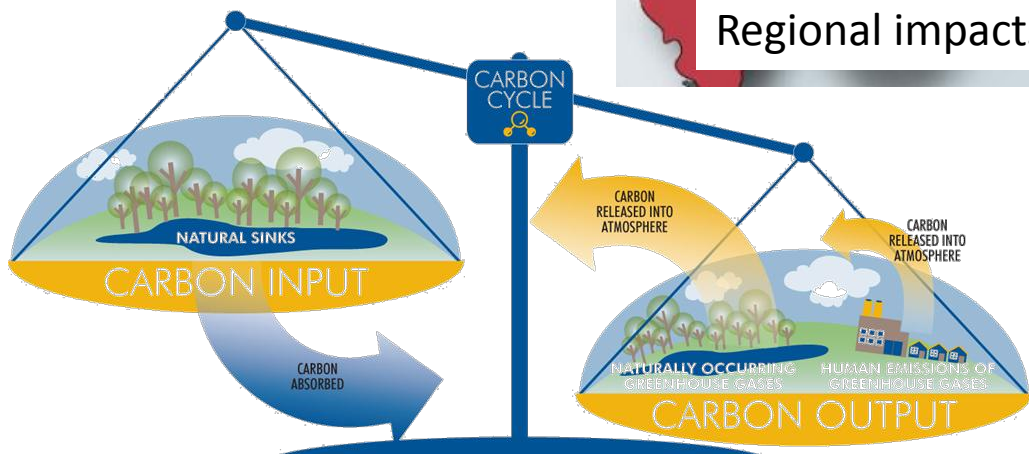


# CLIMATE CHANGE

IN THE WINDY CITY AND THE WORLD



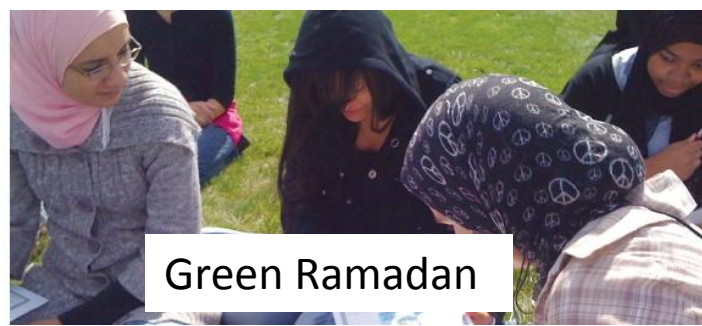
Global warming=snow?



Basic climate science data visualization



Local indicator species



Green Ramadan


### QUIZ AND DISCUSSION QUESTIONS


Do you have more questions about climate science? Check out the FAQs page on the Chicago Community Climate Action Toolkit.

What did you learn? Answer these questions to make sure you're understanding the m how climate change relates to the Chicago region. Feel free to refer back to the book words, to help you become more comfortable articulating these ideas. Check your an:


1. What is the difference between weather and climate?
2. What's the difference between climate change and global warming? How are tl
3. Describe the "natural" greenhouse effect and the "enhanced" greenhouse effec
4. How is climate change today different from the past?
5. What is happening to the carbon cycle?
6. How is climate change a
7. What is one action we c


Activity

 RECOMMEND

 TWITTER

 LINKEDIN

 COMMENTS  
(443)

 E-MAIL

Social media campaign



Sector roundtables

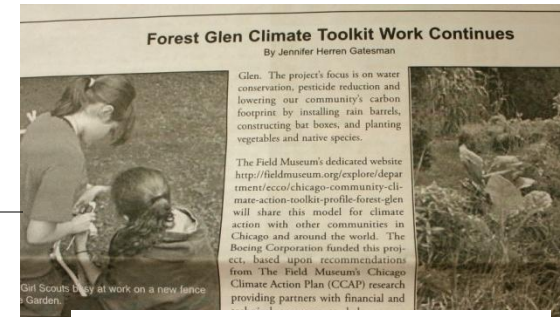


National outreach



Integrate into other activities

# Toolkit Sustainability & Scale-Up

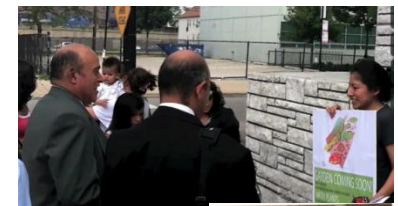


Local PR campaigns



Seek  
additional  
funds

Neighborhood  
recruitment and  
tools distribution



1. Research

2. Assemble

3. Translate

4. Implement

5. Scale



# Key Results to Date

- Energy Action Network-Chicago
- \$25M U.S. DOE Better Buildings grant to Chicago Region
- Presentation to Toronto's Clean Air Partnership
- CUNY Environmental Justice award
- Chicago Community Climate Action Toolkit – partnership with 16 cohort organizations and interest from Union of Concerned Scientists
- South Chicago Retrofit Project
- Featured on U.S. DOE Better Buildings website



1. Research

2. Assemble

3. Translate

4. Implement

5. Scale



TOOLS

COMMUNITY PROJECTS

CLIMATE ACTION MODELS

ABOUT

SHARE



[fieldmuseum.org/climateaction](https://fieldmuseum.org/climateaction)  
[climatechicago.fieldmuseum.org\\*](https://climatechicago.fieldmuseum.org)

\*Full website launches 3/12

1. Research

2. Assemble

3. Translate

4. Implement

5. Scale